

# Christchurch Football Squash Club Club Apparel Size Guide:

Measurement Units = Centimetres

## Unisex Hoodie:

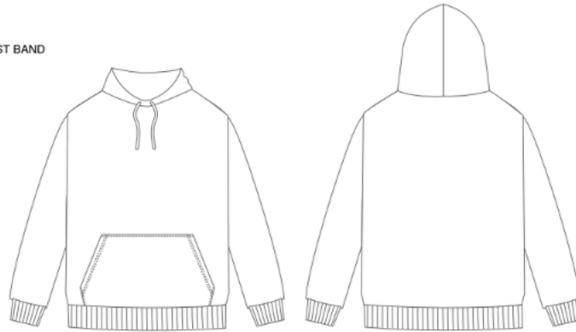
### OUTERWEAR



#### P127

#### UNISEX HOODIE

BODY FABRIC: FLEECE  
 DESIGN APPLICATION: CUT & SEW ONLY  
 POCKET: KANGAROO POCKET  
 CUFF: RIBBED CUFF & WAIST BAND



#### GARMENT CRITICAL NOTES

- Kangaroo Pocket
- Ribbed cuff and waist band
- Cut & Sew only

RELAXED FIT

#### SIZE CHART

		KIDS'						
		6	8	10	12	14	16	
A	1/2 CHEST	42	44	46	48	50	54	
B	LENGTH AT CB	50	52	54	56	58	64	

		MEN'S							
		XS	S	M	L	XL	2XL	3XL	4XL
A	1/2 CHEST	54	56	58	60	62	64	66	68
B	LENGTH AT CB	64	66	68	70	72	74	76	78

# Unisex T-Shirt:

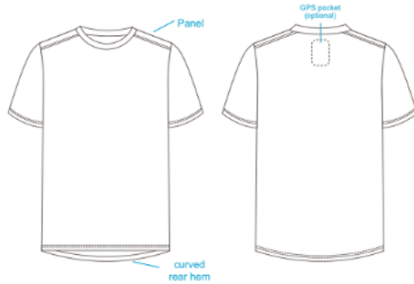
## T-SHIRT



### P925

#### UNISEX SHORT SLEEVE T-SHIRT

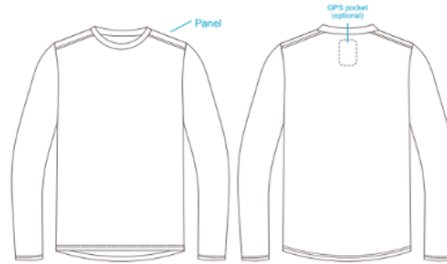
**BODY FABRIC:** K29 (SUBJECT TO CHANGE)  
**PANEL FABRIC:** K29 (SUBJECT TO CHANGE)  
**DESIGN APPLICATION:** SUBLIMATION OR CUT & SEW  
**GPS POCKET:** OPTIONAL (REP TO STIPULATE)



### P925L

#### UNISEX LONG SLEEVE T-SHIRT

**BODY FABRIC:** K29 (SUBJECT TO CHANGE)  
**PANEL FABRIC:** K29 (SUBJECT TO CHANGE)  
**DESIGN APPLICATION:** SUBLIMATION OR CUT & SEW  
**GPS POCKET:** OPTIONAL (REP TO STIPULATE)



#### GARMENT CRITICAL NOTES

- Curved Rear Hem
- GPS Pocket is optional - AM to stipulate

ATHLETIC FIT

#### SIZE CHART

		KIDS'									
		2	4	6	8	10	12	14	16	18	
A	1/2 CHEST	36	38	40	42	44	46	48	50	52	
B	LENGTH FROM HSP	52	54	56	58	60	62	64	66	68	

		MEN'S									
		XS	S	M	L	XL	2XL	3XL	4XL	5XL	
A	1/2 CHEST	49	51.5	54	56.5	59	61.5	64	66.5	69	
B	LENGTH FROM HSP	70	72	74	76	78	80	82	84	86	

# Unisex Polo:

## POLO'S



### P670

#### UNISEX SHORT SLEEVE POLO

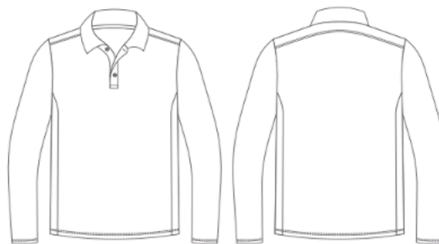
BODY FABRIC: 5121 (SUBJECT TO CHANGE)  
 PANEL FABRIC: 5121 (SUBJECT TO CHANGE)  
 DESIGN APPLICATION: SUBLIMATION OR CUT & SEW



### P670L

#### UNISEX LONG SLEEVE POLO

BODY FABRIC: 5121 (SUBJECT TO CHANGE)  
 PANEL FABRIC: 5121 (SUBJECT TO CHANGE)  
 DESIGN APPLICATION: SUBLIMATION OR CUT & SEW  
 SLEEVE CUFF: OPTIONAL (REP TO STIPULATE)



#### CRITICAL GARMENT NOTES

- N/A

ATHLETIC FIT

#### SIZE CHART

		KIDS'								
		2	4	6	8	10	12	14	16	
A	1/2 CHEST	36	38	40	42	44	46	48	50	
B	LENGTH ON CB	55	57	59	61	63	65	67	69	

		MEN'S											
		XS	S	M	L	XL	2XL	3XL	4XL	5XL	6XL	7XL	8XL
A	1/2 CHEST	50	52	54	56	58	60	62	64	66	68	70	72
B	LENGTH ON CB	69	71	73	75	77	79	81	83	85	87	89	91

# Ladies Singlet:

## SINGLET



### P1090

**ELITE LADIES RACER BACK SINGLET**  
BODY FABRIC: K29 (SUBJECT TO CHANGE)  
CONTRAST K9 BACK (SUBJECT TO CHANGE)  
DESIGN APPLICATION: SUBLIMATION OR CUT & SEW



#### GARMENT CRITICAL NOTES

- Hem edging

FITTED FIT

#### SIZE CHART

		WOMEN'S							
		6/XXS	8/XS	10/S	12/M	14/L	16/XL	18/2XL	
A	1/2 CHEST	34	36	38	40	42	44.5	47	
B	LENGTH AT CB	56	57	58	59	60	61	62	